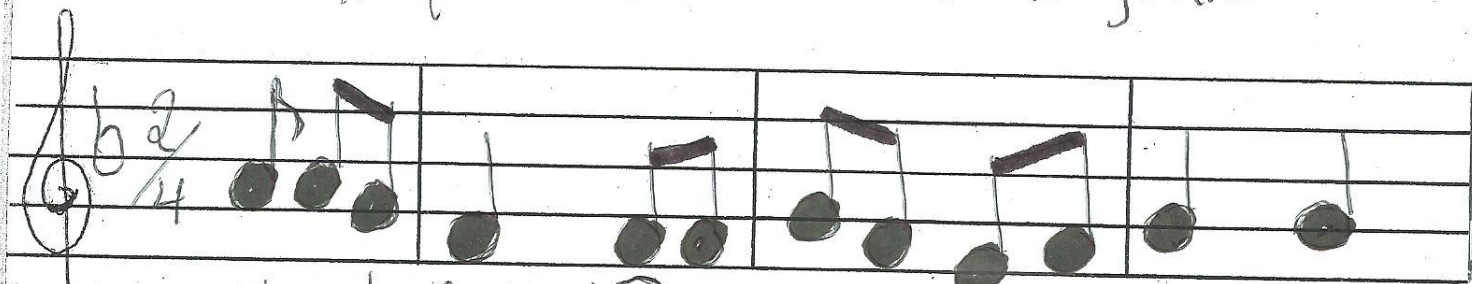
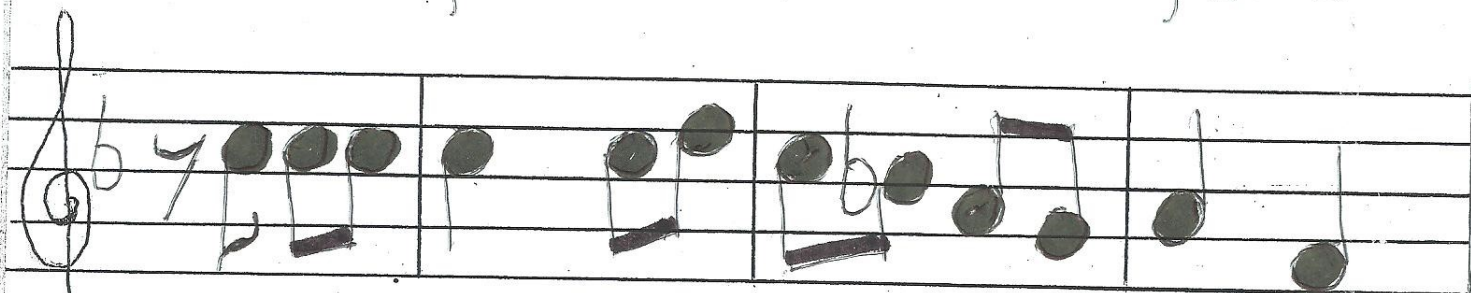


Um elefante incomoda muita gente

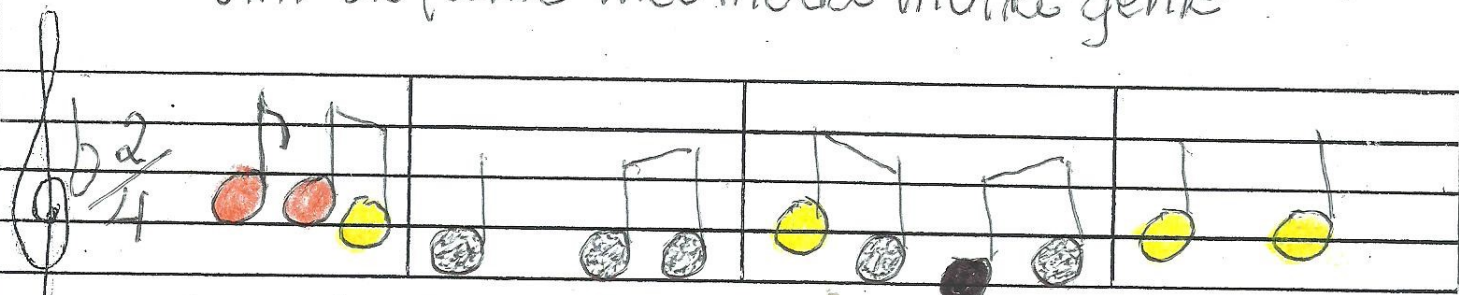


Um ele-fan-te in-co-mo-da muita gen-te

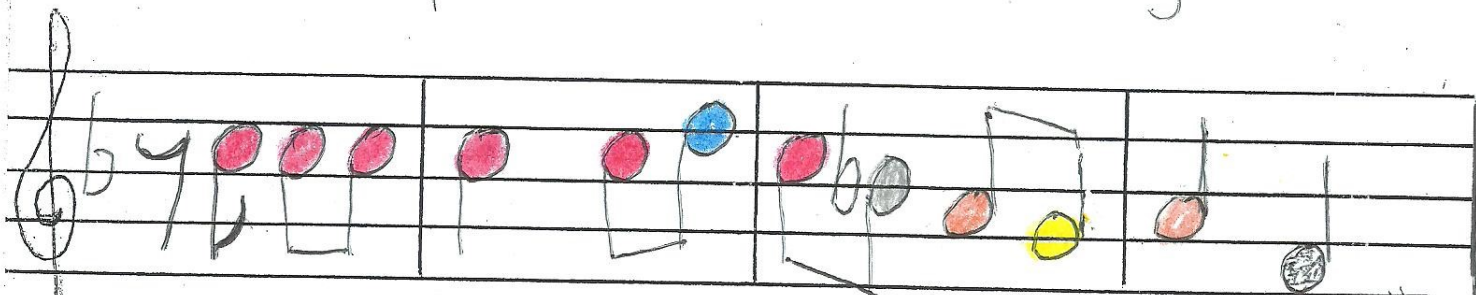


- dois ele-fan-tes in-co-mo-dam muito ma--ais

Um elefante incomoda muita gente



Um ele-fan te in-co-mo-da muita gen-te



- dois elefan-tes in-co-mo-dam muito ma--ais